



RECEIVED
D.C. OFFICE OF ZONING
2007 MAY 18 2:18

WATERFRONT SOUTHWEST, WASHINGTON, D.C.

A PLANNED UNIT DEVELOPMENT

STAGE ONE PUD MODIFICATION APPLICATION
SUPPLEMENTAL PREHEARING SUBMISSION
ZONING COMMISSION CASE NUMBER 02-38A

MAY 18, 2007

OWNER
WATERFRONT ASSOCIATES LLC

DEVELOPER
FOREST CITY WASHINGTON & VORNADO / CHARLES E. SMITH

LAND USE COUNSEL
HOLLAND & KNIGHT LLP

ARCHITECT
SHALOM BARANES ASSOCIATES, PC

LANDSCAPE ARCHITECT
OCULUS

TRAFFIC CONSULTANT
GOROVE SLADE & ASSOCIATES

CIVIL ENGINEER
A. MORTON THOMAS & ASSOCIATES, INC

ZONING COMMISSION
District of Columbia

CASE NO. 02-38A
EXHIBIT NO. 25

ZONING COMMISSION
District of Columbia
CASE NO.02-38A
EXHIBIT NO.25



DRAWING INDEX:

No.	Title:	FILING REQUIREMENT: DCMR 11, Section:
---	Cover Sheet	---
1.0	Aerial Photo and Drawing Index	2406.11 (e7)
1.1	Context Aerial Photograph - View from Southeast	2406.11 (e7)
1.2	Proposed Stage 1 PUD Modification - Aerial Rendering <small>(with Approved on facing page for reference)</small>	2406.11 (e7)
1.3	Development Data and Zoning Diagram	2406.11 (b) (e, 1-3)
1.4	Extent of Stage 2 PUD Submission	---
1.5	Model Photograph - View from Southeast	2406.11 (e7)
1.6	Model Photograph - View from Northeast	2406.11 (e7)
1.7	Model Photograph - View from Southwest	2406.11 (e7)
1.8	Model Photograph - View from Northwest	2406.11 (e7)
1.9	Model Photograph - View from South	2406.11 (e7)
2.0	Proposed - Building Height, Area & Use Diagram <small>(with Approved on facing page for reference)</small>	2406.11 (d)
2.1	Proposed Alternative to Building Height, Area & Use Diagram	2406.11 (d)
2.2	Proposed - Context Circulation Plan <small>(with Approved on facing page for reference)</small>	2406.11 (e4)
2.3	Proposed - Site Circulation Plan <small>(with Approved on facing page for reference)</small>	2406.11 (e4)
2.4	Proposed - Open Space Diagram <small>(with Approved on facing page for reference)</small>	2406.11 (d)
2.5	Proposed - Minimum Retail Commitment Diagram <small>(with Approved on facing page for reference)</small>	2406.11 (d)
3.0	B1 Level Parking Plan	2406.11 (d)
3.1	B2 Level Parking Plan	2406.11 (d)
3.2	B3 Level Parking Plan	2406.11 (d)
4.0	Site Elevations	2406.11 (d)
4.1	Site Sections	2406.11 (d)
5.0	Probable Development Sequence	2406.11 (d) (e7)
6.0	Site Survey (1 of 2)	2406.11 (d) (e5)
6.1	Site Survey (2 of 2)	2406.11 (d) (e5)

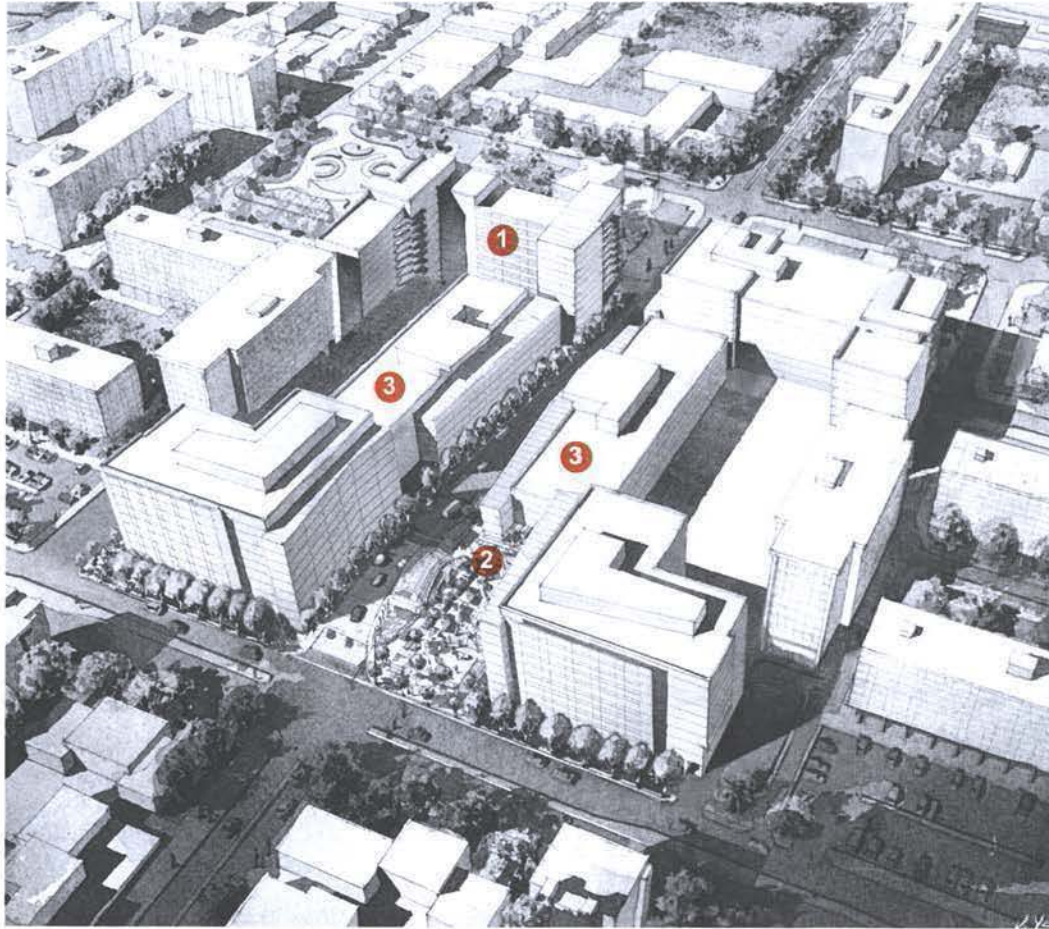


W A T E R F R O N T WASHINGTON, D. C.

shalom baranes associates architects

Stage 1 PUD Modification - Supplemental Prehearing Submission | May 18, 2007 | copyright © 2008 sba PC

Context Aerial Photograph - View from Southeast 1.1



Key Modifications to the Approved Stage 1 PUD:

- 1 Potential Increase in Residential Density:**
 - Potential to triple the residential density of the Approved Stage 1 PUD
 - Potential conversion of the Northeast building, East Tower, and West Tower from commercial office to residential use

- 2 Increase Public Open Space:**
 - More than double the public plaza adjacent to the Metro
 - Propose East and West Public Plazas that traverse the site

- 3 East and West Fourth Street Commercial Office Building Height:**
 - Propose to increase from 79' (6 stories/12' retail ceiling) to 94' (8 stories/14' retail ceiling)
 - Two stories of additional density are proposed due to the potential conversion of the Northeast building to residential use, equivalent to 70,000 GSF of reallocated commercial density, and the creation of additional open space
 - Two additional stories are achievable since the proposed building is no longer built over an existing structure

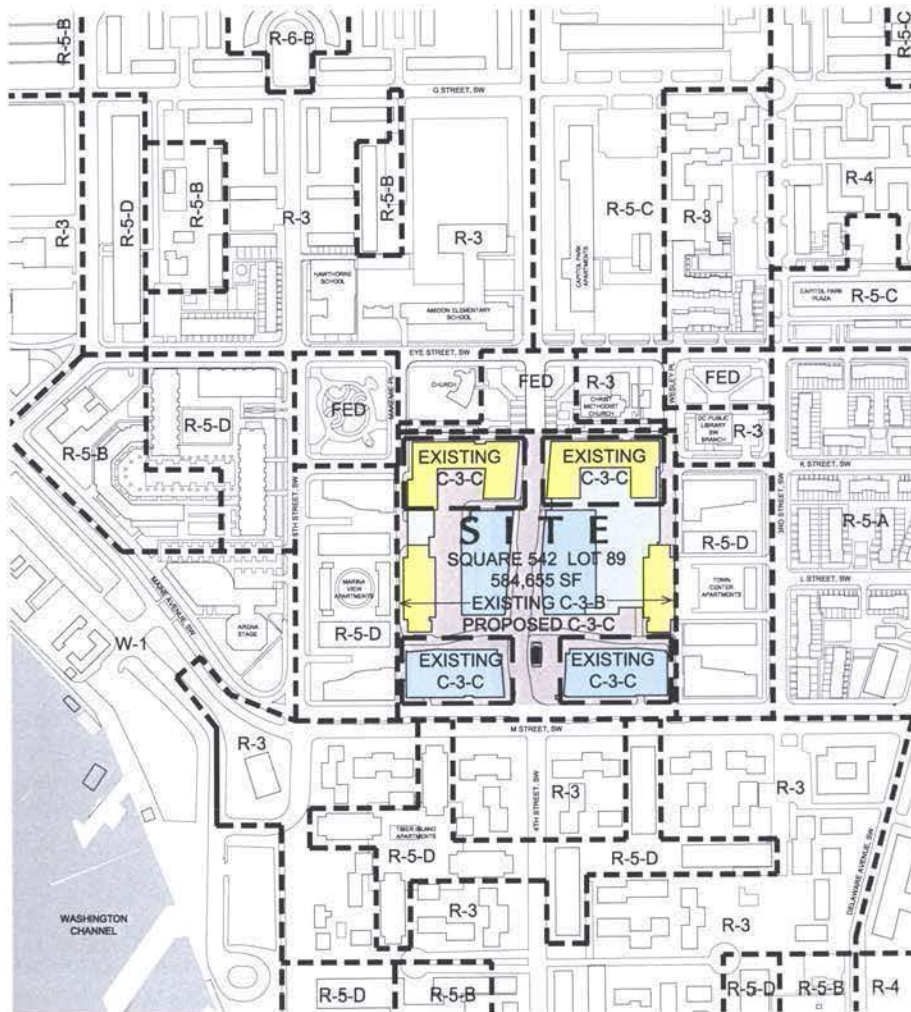


W A T E R F R O N T W A S H I N G T O N , D . C .

shalom baranes associates architects

Stage 1 PUD Modification - Supplemental Prehearing Submission | May 18, 2007 | Copyright © 2008 SBA, PC

PROPOSED Stage 1 PUD Modification - Aerial Rendering | 1.2

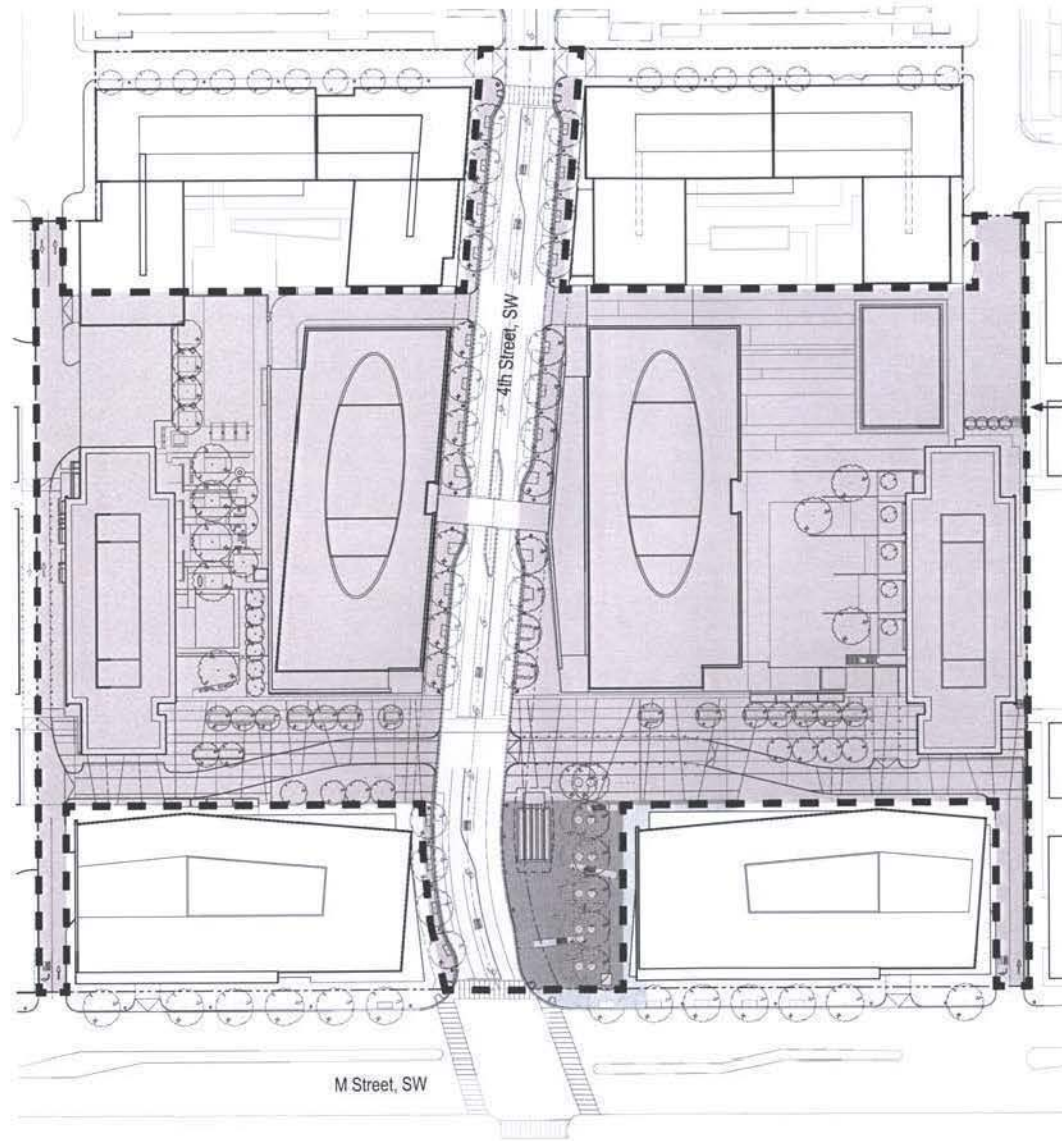


ZONING TABULATION

	APPROVED STAGE 1 PUD	PROPOSED STAGE 1 PUD MOD.
ZONING DISTRICT:	C-3-B / C-3-C	C-3-C
SITE AREA:	584,655 sf	584,655 sf
FAR:	RESIDENTIAL = 0.69 COMMERCIAL = 3.64 TOTAL = 4.33	RESIDENTIAL = 2.11 COMMERCIAL = 2.22 TOTAL = 4.33
GROSS FLOOR AREA:	RESIDENTIAL = 400,000 sf COMMERCIAL ¹ = 2,126,500 sf TOTAL = 2,526,500 sf	RESIDENTIAL = 1,229,605 sf COMMERCIAL ¹ = 1,296,895 sf TOTAL = 2,526,500 sf
HEIGHT:	EXISTING MAXIMUM ⁴ = 130 ft PROPOSED RESIDENTIAL = 112 ft PROPOSED OFFICE = 79 ft-112 ft	EXISTING MAXIMUM ⁴ = 130 ft PROPOSED RESIDENTIAL = 114 ft PROPOSED OFFICE = 94 ft-114 ft
STORIES:	EXISTING MAXIMUM = 12 PROPOSED RESIDENTIAL = 12 PROPOSED OFFICE = 6-10	EXISTING MAXIMUM = 12 PROPOSED RESIDENTIAL = 12 ² PROPOSED OFFICE = 8-10
LOT OCCUPANCY:	65% ³	58% ³
RESIDENTIAL RECREATION SPACE:	10% of Residential GFA Req'd = 40,000 sf PROPOSED = 40,000 sf Outside space (min) = 20,000 sf	10% of Residential GFA Req'd = 122,960 sf 5.6% PROPOSED (exterior) = 70,000 sf Plus additional Interior Space
REAR YARD:	2.5 in/ft = 28.02 ft min.	2.5 in/ft = 28.02 ft min.
SIDE YARD:	EAST: None Provided ⁴ WEST: 22.71 ft	EAST: None Provided ⁴ WEST: 22.71 ft
PENTHOUSE HEIGHT:	18.5 ft max.	18.5 ft max.
PENTHOUSE AREA:	.37FAR max.	.37FAR max.
PARKING^{5A,D,E} : OFFICE^{5B}:	Over 2,000 sf, 1 per 1,800 sf = 1,139	Over 2,000 sf, 1 per 1,800 sf = 678
RETAIL^{5B}:	Over 3,000 sf, 1 per 750 sf = 96	Over 3,000 sf, 1 per 750 sf = 99
RESIDENTIAL^{5C}:	1 for each 4 dwelling units = 100 total spaces = 1,335 MIN	1 for each 4 dwelling units = 310 total spaces = 1,087 MIN
LOADING⁶ :	OFFICE: 3 @ 30 ft 1 @ 20 ft	3 @ 30 ft 1 @ 20 ft
RETAIL:	2 @ 55 ft 2 @ 30 ft 2 @ 20 ft	2 @ 55 ft 2 @ 30 ft 2 @ 20 ft
RESIDENTIAL:	1 @ 55 ft 1 @ 20 ft	1 @ 55 ft 1 @ 20 ft

NOTES:

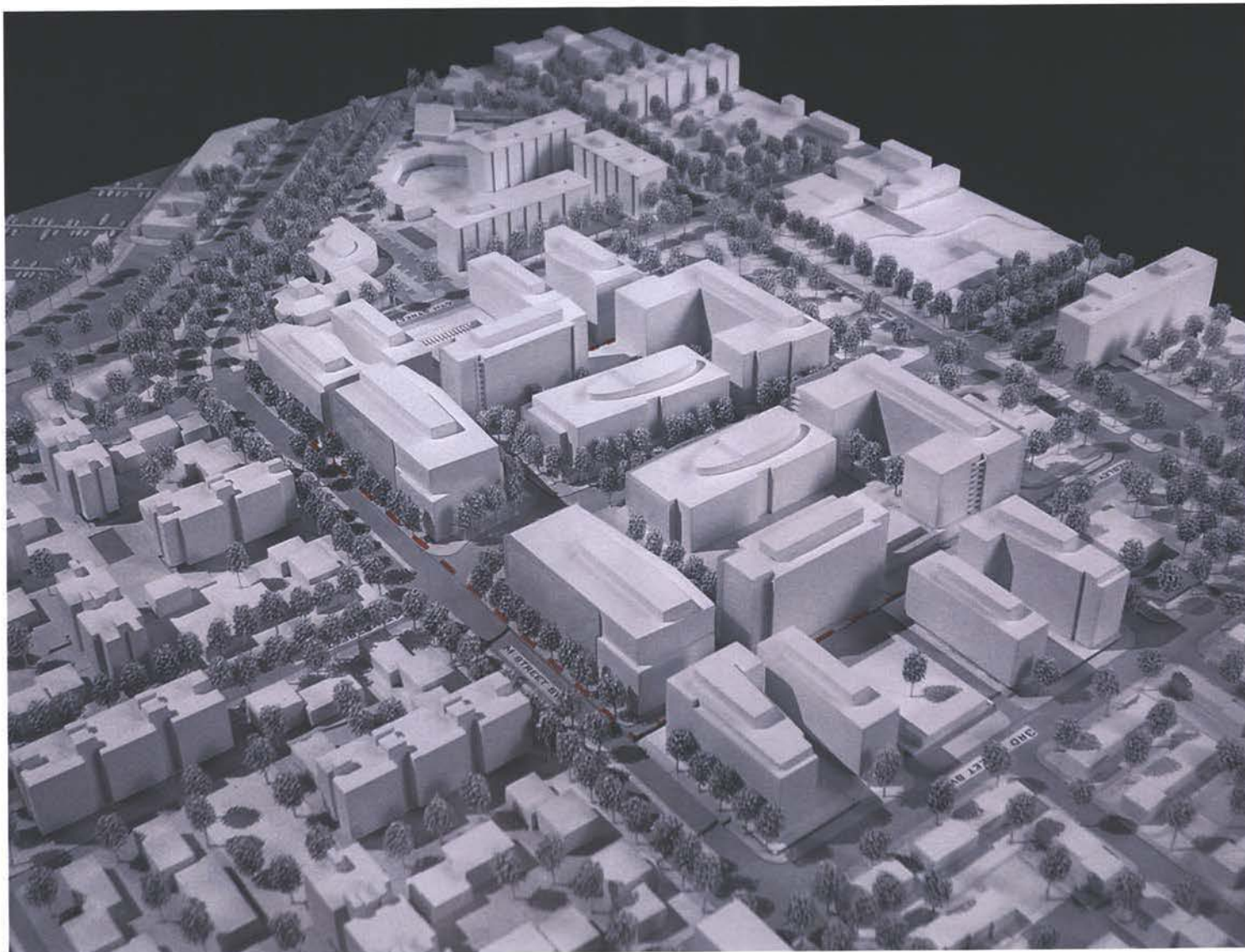
- RETAIL GFA:**
A MINIMUM OF 75,000 SF OF RETAIL GROSS FLOOR AREA WILL BE PROVIDED ON THE GROUND FLOOR, 55,000 SF OF WHICH IS RESERVED FOR A GROCERY STORE. THE REMAINING COMMERCIAL DENSITY WILL BE DEVOTED TO OFFICE USE. FLEXIBILITY TO PROVIDE ADDITIONAL RETAIL GROSS FLOOR AREA IN LIEU OF OFFICE GROSS FLOOR AREA IS REQUESTED.
- STORIES:**
FLEXIBILITY TO PROVIDE THIRTEEN STORIES IN LIEU OF TWELVE STORIES WITHIN THE APPROVED MAXIMUM HEIGHT IS REQUESTED.
- LOT OCCUPANCY:**
FLEXIBILITY TO PROVIDE A MAXIMUM OF 63% LOT OCCUPANCY IS REQUESTED.
- CONFORMING STRUCTURES:**
AS A BUILDING BUILT PRIOR TO THE ADOPTION OF DC ZONING IN THE SOUTHWEST URBAN RENEWAL AREA WHICH CONFORMED TO THE HEIGHT, AREA AND BULK PROVISIONS OF THE URBAN RENEWAL PLANS, THE EXISTING BUILDING IS CONSIDERED A CONFORMING STRUCTURE. (DCMR 11, 2521.1(E))
- PARKING:**
A) THE NUMBER OF PROVIDED PARKING SPACES SATISFIES THE REQUIREMENTS OF DCMR 11. FLEXIBILITY TO INCREASE THE NUMBER OF PROVIDED PARKING SPACES, TO RESPOND TO MARKET CONDITIONS, IS REQUESTED.
B) AS REFERENCED IN NOTE #1 ABOVE, THE FLEXIBILITY TO PROVIDE ADDITIONAL RETAIL DENSITY IS REQUESTED, SHOULD THE DISTRIBUTION OF GROSS FLOOR AREA BETWEEN OFFICE AND RETAIL CHANGE, THE STATED RATIO OF PARKING WILL BE PROVIDED.
C) RESIDENTIAL PARKING IS BASED ON AN ASSUMPTION THAT ONE DWELLING UNIT IS PROVIDED FOR EACH 1,000 SF OF RESIDENTIAL GROSS FLOOR AREA. THE FINAL DWELLING UNIT COUNT MAY VARY.
D) BICYCLE PARKING SPACES SHALL BE PROVIDED IN CONFORMANCE WITH ZONING REQUIREMENTS AS OUTLINED UNDER DCMR TITLE 11, SECTION 2119.
E) PARKING TABULATIONS ARE BASED ON PRORATED AREA REDUCTIONS FOR OFFICE AND RETAIL USES FOR A TOTAL PARKING REDUCTION OF 3,000 SF FOR THE DEVELOPMENT.
- LOADING:**
THE NUMBER OF PROVIDED LOADING BERTHS, PLATFORMS AND SERVICE DELIVERY SPACES SATISFIES THE REQUIREMENTS OF DCMR 11. FLEXIBILITY TO INCREASE THE NUMBER OF BERTHS, PLATFORMS AND SERVICE DELIVERY SPACES IS REQUESTED.



The dashed outline indicates the extent of a concurrent Stage 2 Application.

For complete information, refer to the Stage 2 PUD Submission.





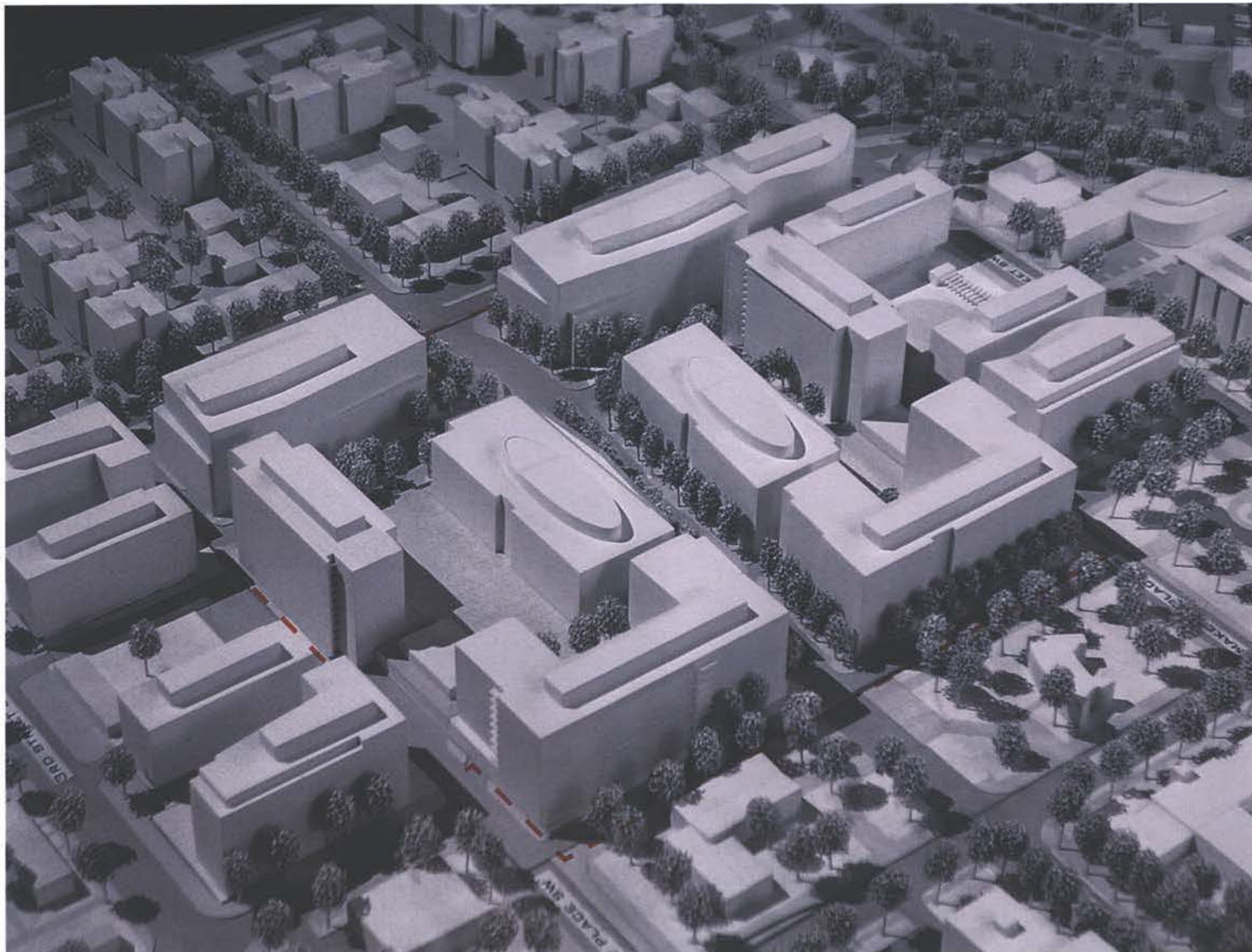
LEGEND:
- - - - - Property Line

W A T E R F R O N T W A S H I N G T O N , D . C .

shalom baranes associates architects

Stage 1 PUD Modification - Supplemental Prehearing Submission | May 18, 2007 | copyright © 2006 sba, PC

Model Photograph - View from Southeast | 1 . 5



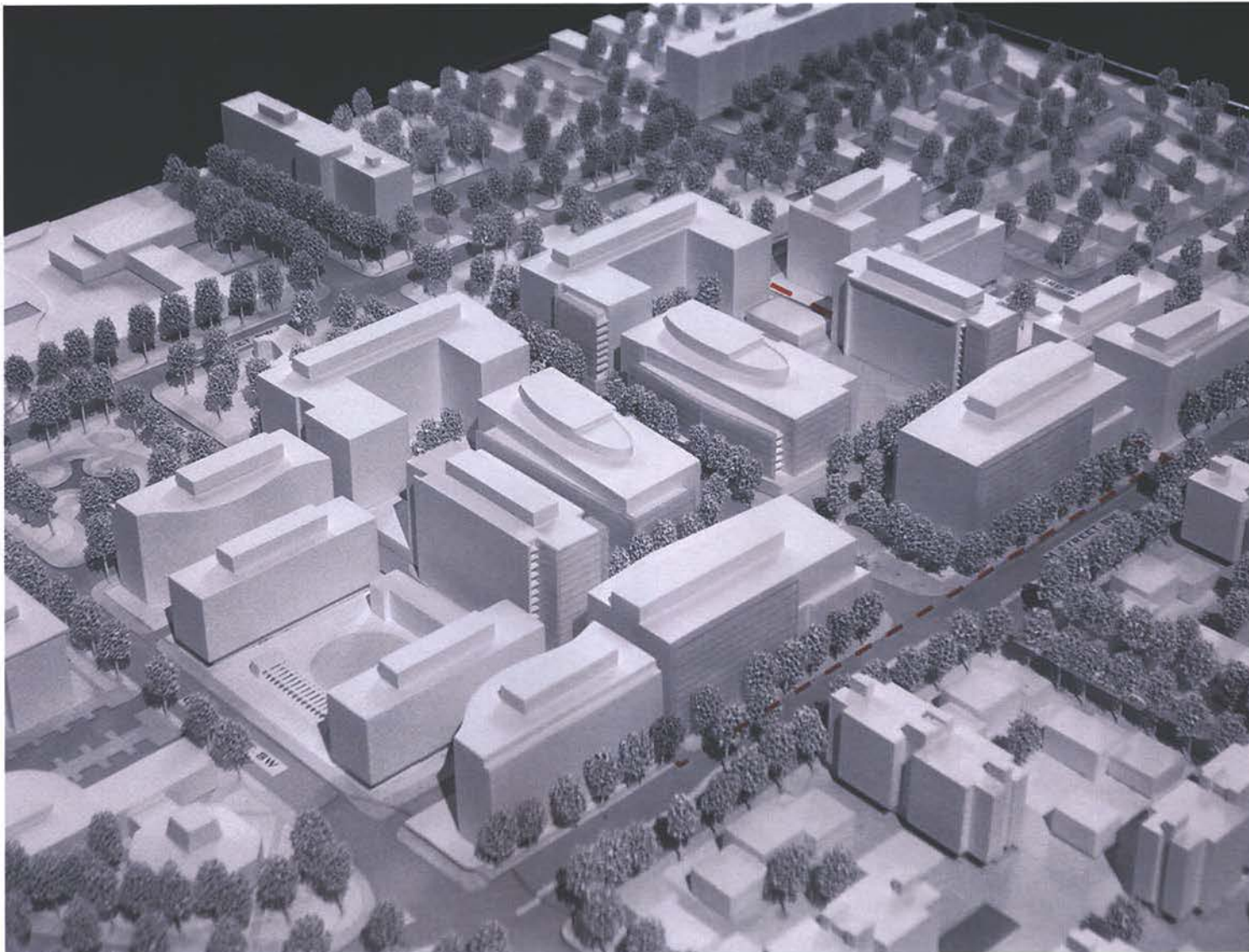
LEGEND:
- - - Property Line

W A T E R F R O N T W A S H I N G T O N , D . C .

shalom baranes associates | architects

Stage 1 PUD Modification - Supplemental Prehearing Submission | May 18, 2007 | copyright © 2006 shaloban.com

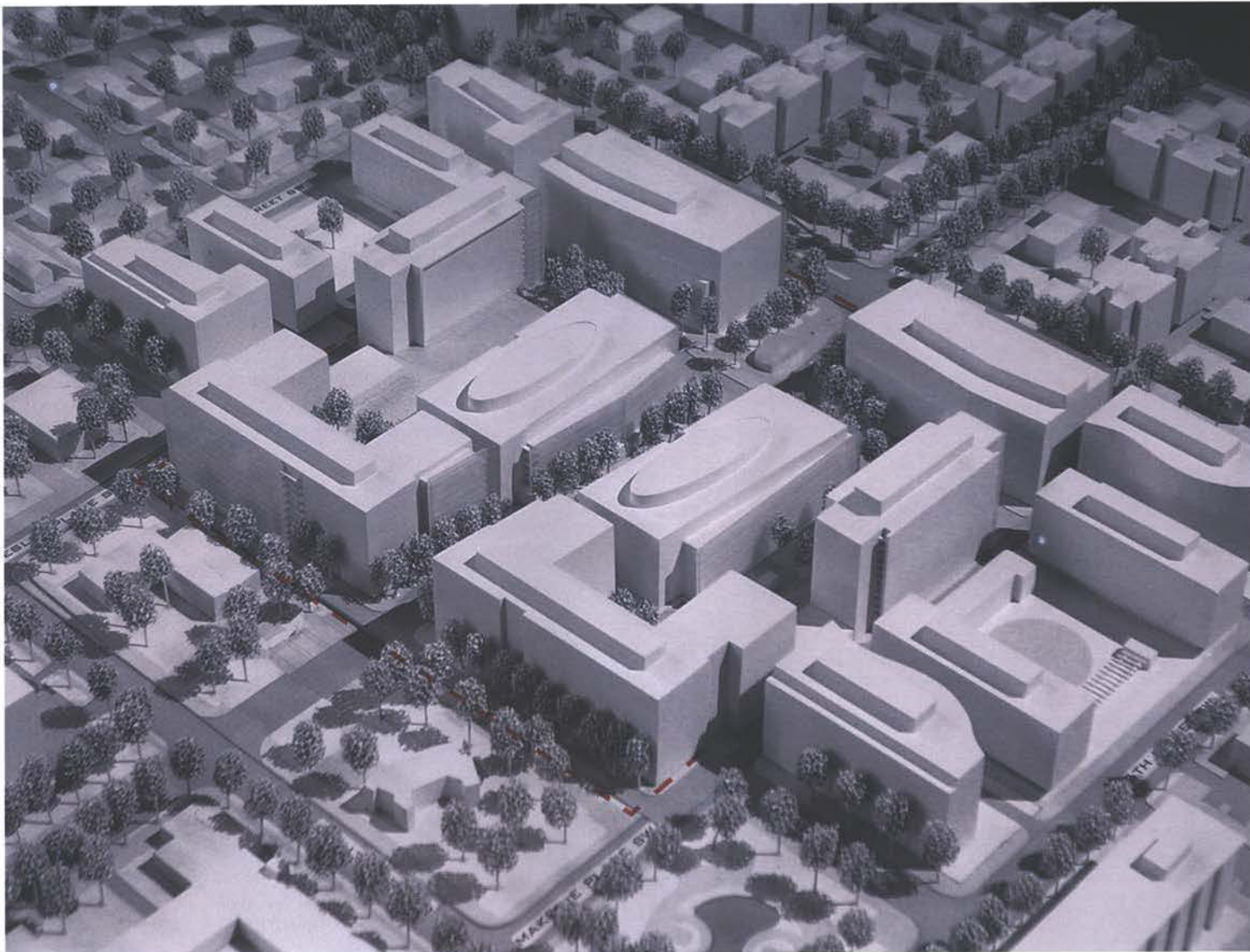
Model Photograph - View from Northeast | 1.6



LEGEND:
- - - - - Property Line

W A T E R F R O N T W A S H I N G T O N , D . C .

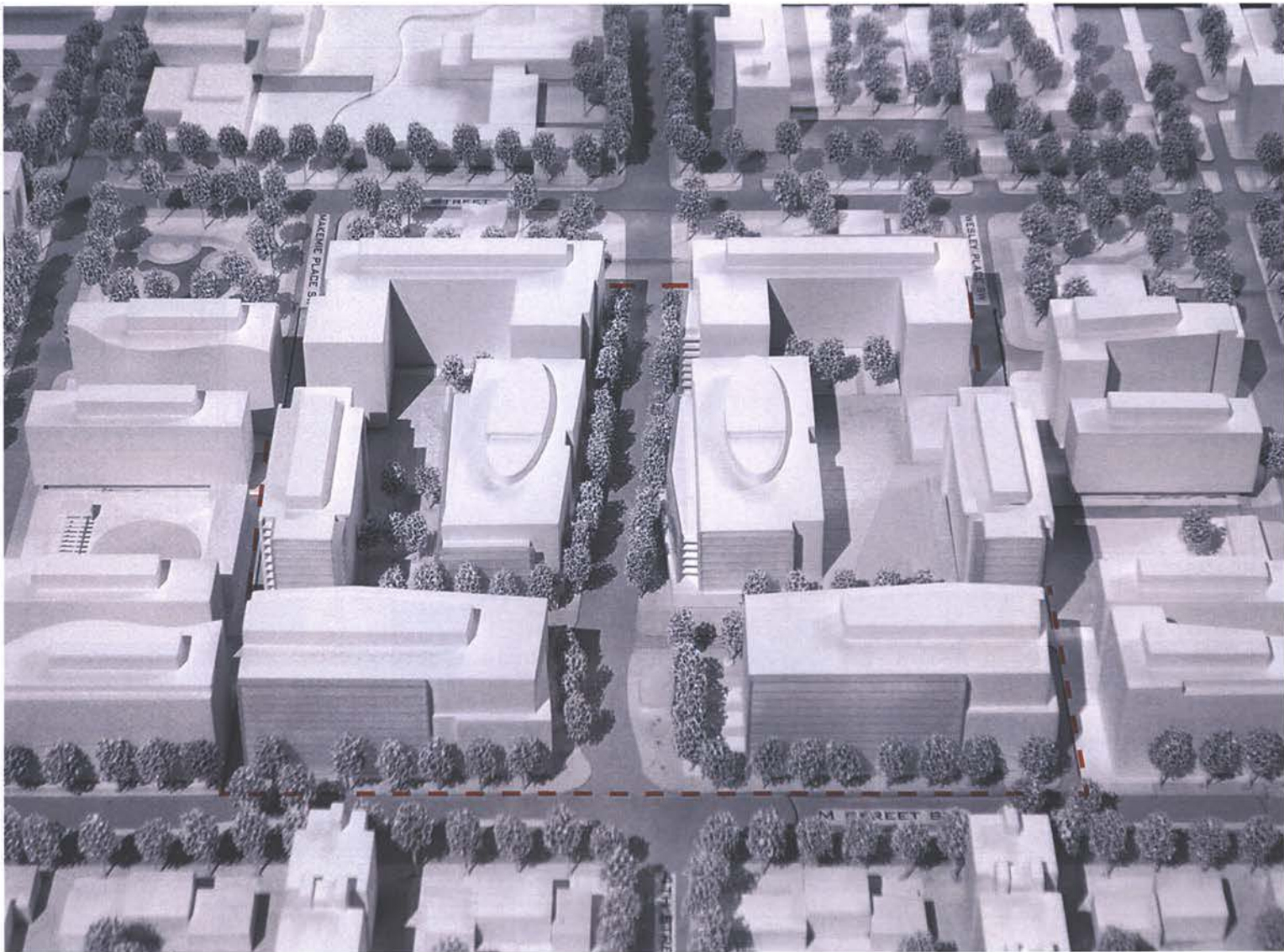
shalom baranes associates | architects



LEGEND:
- - - Property Line

W A T E R F R O N T W A S H I N G T O N , D . C .

shalom baranes associates | architects



LEGEND:
- - - Property Line

W A T E R F R O N T WASHINGTON, D. C.

shalom baranes associates architects

NORTHWEST BUILDING

New Residential Building
12 Floors / 112' Bldg. Ht. / 18.5' Mech. P.H.
400,000 GFA - (2 Phases of 200,000 SF each)

WEST 4TH STREET BUILDING

New Office Building
6 Floors / 79' Bldg. Ht. / 18.5' Mech. P.H.
312,500 GFA - (includes 75,000 GFA of existing parking)

WEST TOWER

Existing Office Building
12 Floors / 130' Bldg. Ht.
192,500 GFA

WEST M STREET BUILDING

New Office Building
10 Floors / 112' Bldg. Ht. / 18.5' Mech. P.H.
350,000 GFA

NORTHEAST BUILDING

New Office Building
10 Floors / 112' Bldg. Ht. / 18.5' Mech. P.H.
470,000 GFA

EAST 4TH STREET BUILDING

New Office Building
6 Floors / 79' Bldg. Ht. / 18.5' Mech. P.H.
265,000 GFA (includes 50,500 GFA of existing 1 story commercial building)

EAST TOWER

Existing Office Building
12 Floors / 130' Bldg. Ht.
201,500 GFA

EAST M STREET BUILDING

New Office Building
10 Floors / 112' Bldg. Ht. / 18.5' Mech. P.H.
350,000 GFA



NOTE:

The design of the building footprints are shown for illustrative purposes, conforming to the density, setback, and height limitations proposed in the drawings. Final design proposals for the buildings will be filed in subsequent Second Stage PUD applications.

Total Residential:	1,229,605 sf 2.11 FAR
Total Commercial:	1,296,895 sf 2.22 FAR
Total Development:	2,526,500 sf 4.33 FAR

NORTHWEST BUILDING

New Residential Building
12 Floors Condo / 114' Bldg. Ht.
13 Floors Rental / 114' Bldg. Ht.
total area 406,900 sf

WEST 4TH STREET BUILDING

New Commercial Office Building
8 Floors / 94' Bldg. Ht.
total area 291,570 sf

Shared Private Drive requires mutual approval by Waterfront Associates and Marina View

WEST TOWER

Converted Residential Building
12 Floors / 130' Bldg. Ht.
total area 219,600 sf

WEST M STREET BUILDING

New Commercial Office Building
10 Floors / 114' Bldg. Ht.
total area 322,785 sf

NORTHEAST BUILDING

New Residential Building
12 Floors / 114' Bldg. Ht.
with Courtyard over 1 Story Structure
(with option to do 13 Floors with Courtyard at grade)
total area 400,000 sf

EAST 4TH STREET BUILDING

New Commercial Office Building
8 Floors / 94' Bldg. Ht.
total area 273,330 sf

GROCERY (At Grade)

1 Floor / 25' Bldg. Ht.
total area 55,000 sf

EAST TOWER

Converted Residential Building
12 Floors / 130' Bldg. Ht.
total area 218,400 sf

EAST M STREET BUILDING

New Commercial Office Building
10 Floors / 114' Bldg. Ht.
total area 339,815 sf



NOTE:

The design of the building footprints are shown for illustrative purposes, conforming to the density, setback, and height limitations proposed in the drawings. Final design proposals for the buildings will be filed in subsequent Second Stage PUD applications.

NORTHWEST BUILDING

New Commercial Office Building
10 Floors / 114' Bldg. Ht.
total area 406,900 sf

WEST 4TH STREET BUILDING

New Commercial Office Building
8 Floors / 94' Bldg. Ht.
total area 291,570 sf

Shared Private Drive requires mutual approval by Waterfront Associates and Marina View

WEST TOWER

Converted Residential Building
12 Floors / 130' Bldg. Ht.
total area 219,600 sf

WEST M STREET BUILDING

New Commercial Office Building
10 Floors / 114' Bldg. Ht.
total area 322,785 sf

Total Residential:	838,000 sf 1.44 FAR
Total Commercial:	1,688,500 sf 2.89 FAR
Total Development:	2,526,500 sf 4.33 FAR

NORTHEAST BUILDING

New Commercial Office Building
10 Floors / 114' Bldg. Ht.
total area 400,000 sf

EAST 4TH STREET BUILDING

New Commercial Office Building
8 Floors / 94' Bldg. Ht.
total area 273,330 sf

GROCERY (At-Grade)

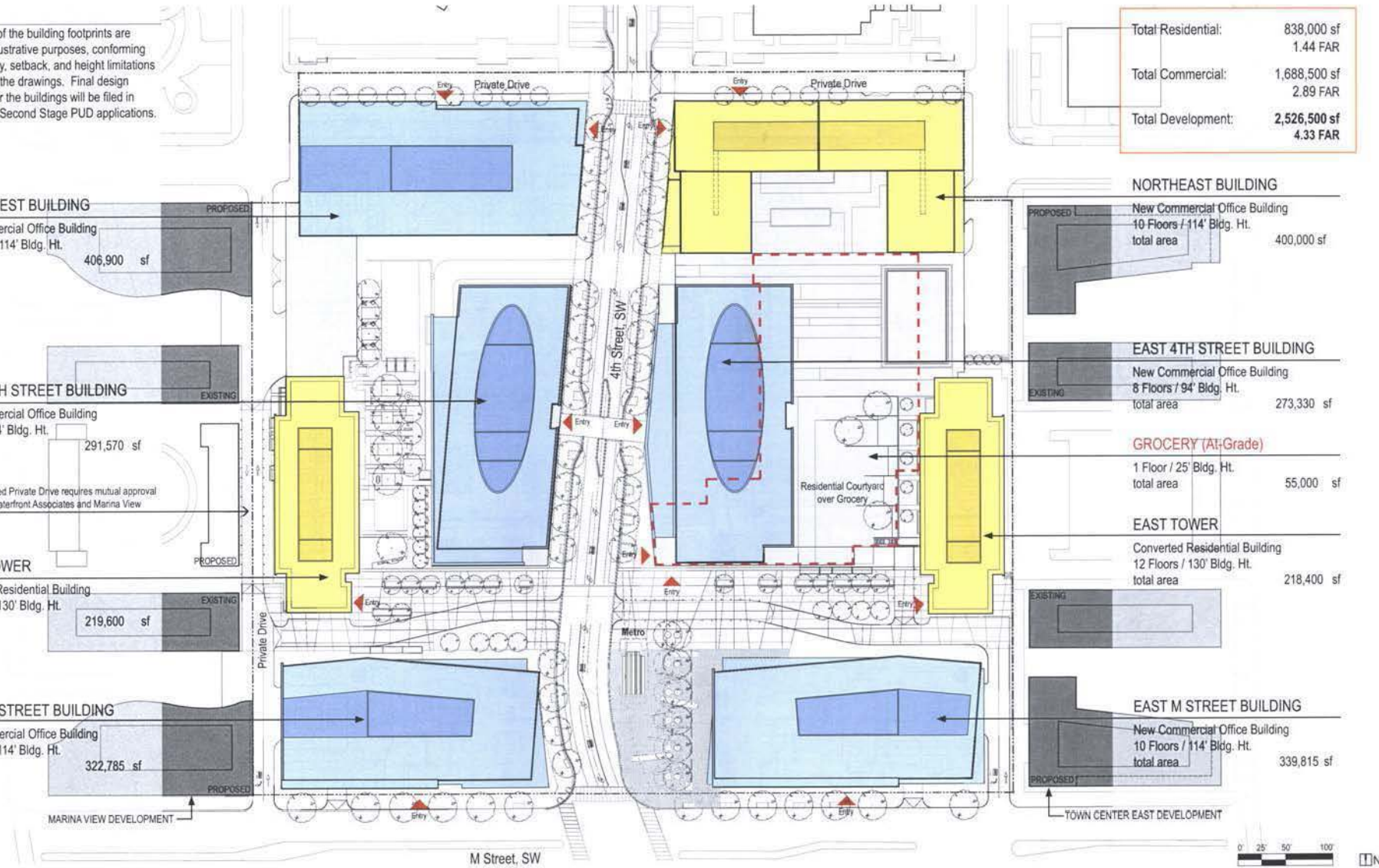
1 Floor / 25' Bldg. Ht.
total area 55,000 sf

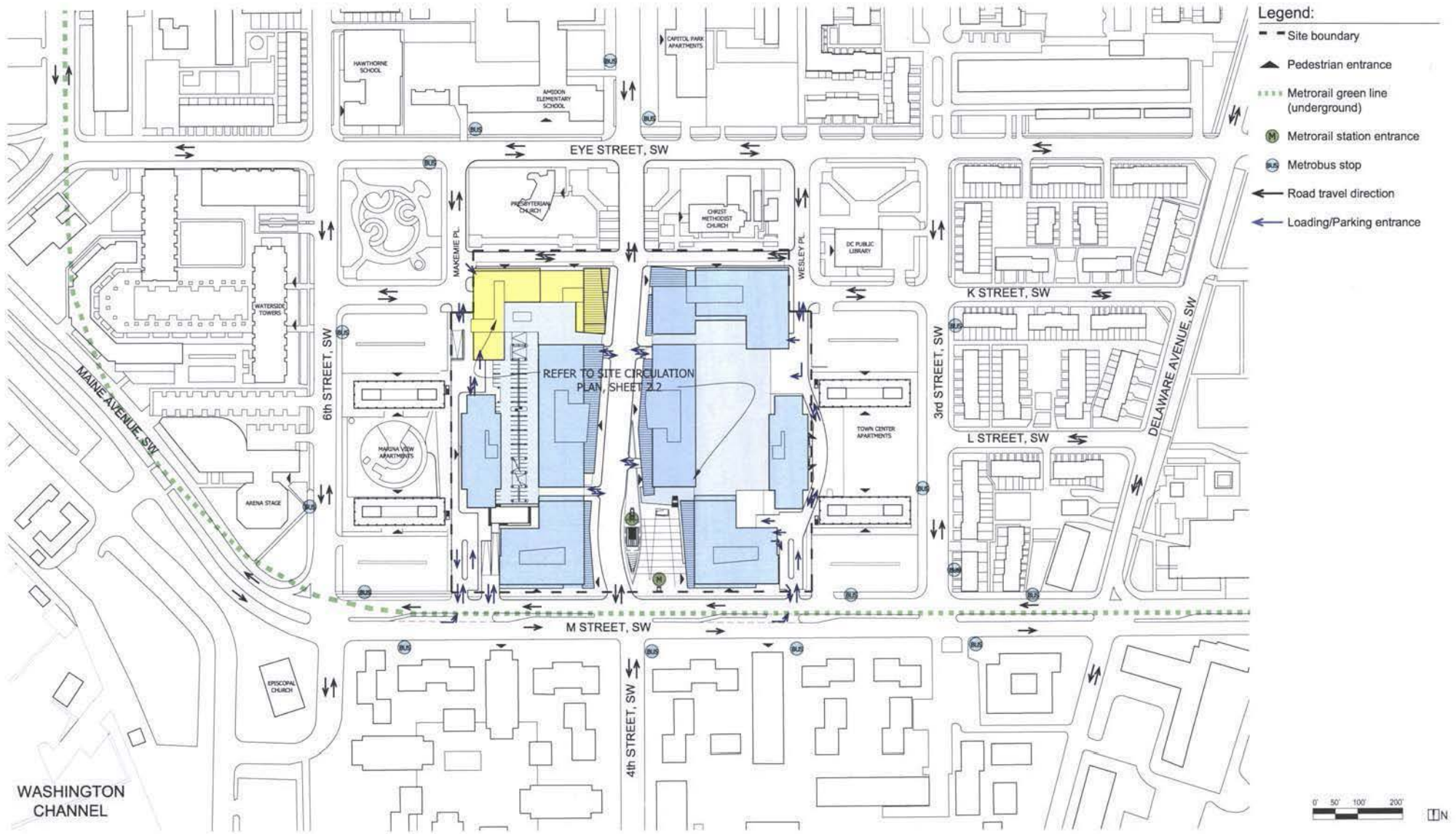
EAST TOWER

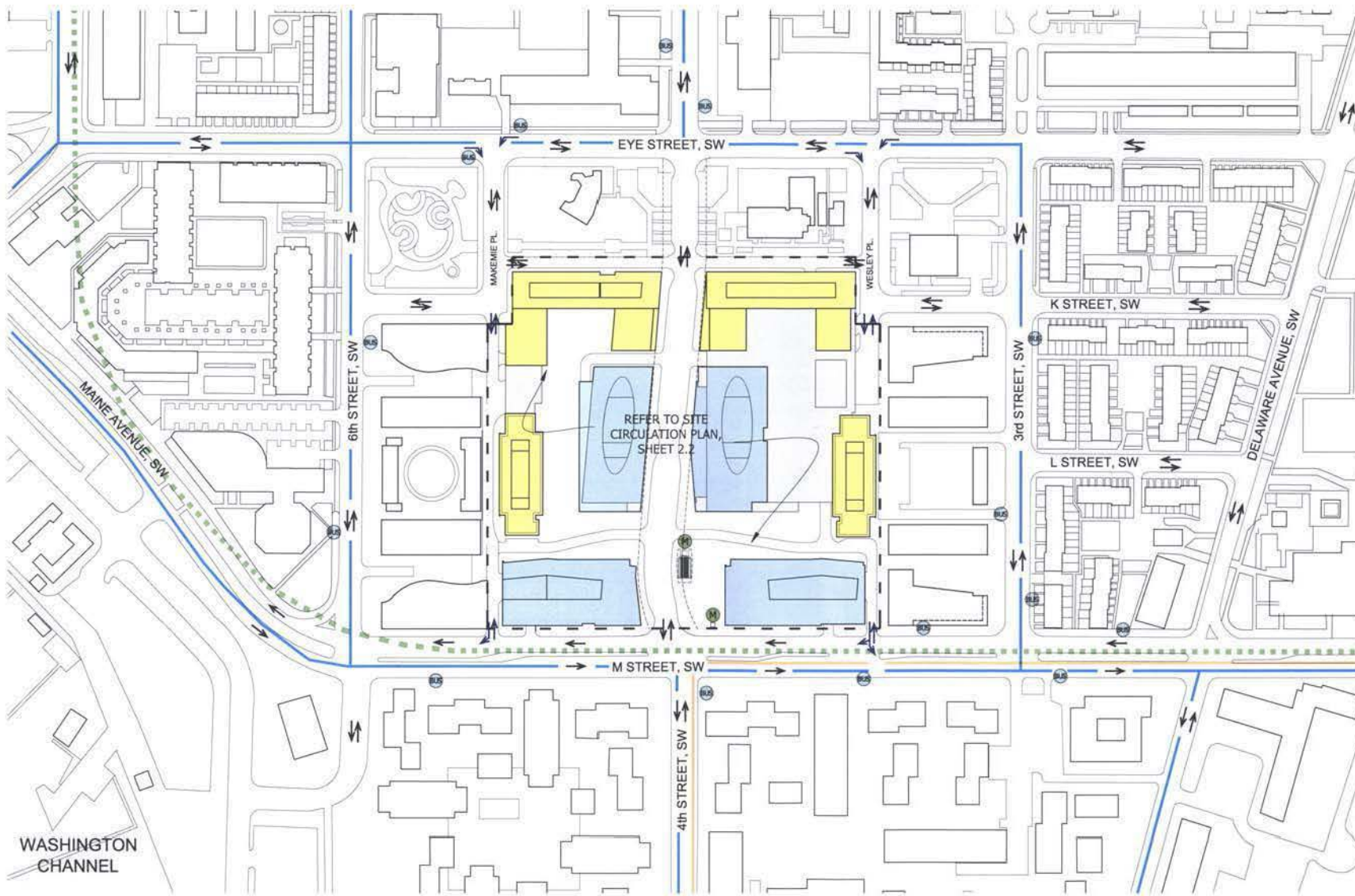
Converted Residential Building
12 Floors / 130' Bldg. Ht.
total area 218,400 sf

EAST M STREET BUILDING

New Commercial Office Building
10 Floors / 114' Bldg. Ht.
total area 339,815 sf



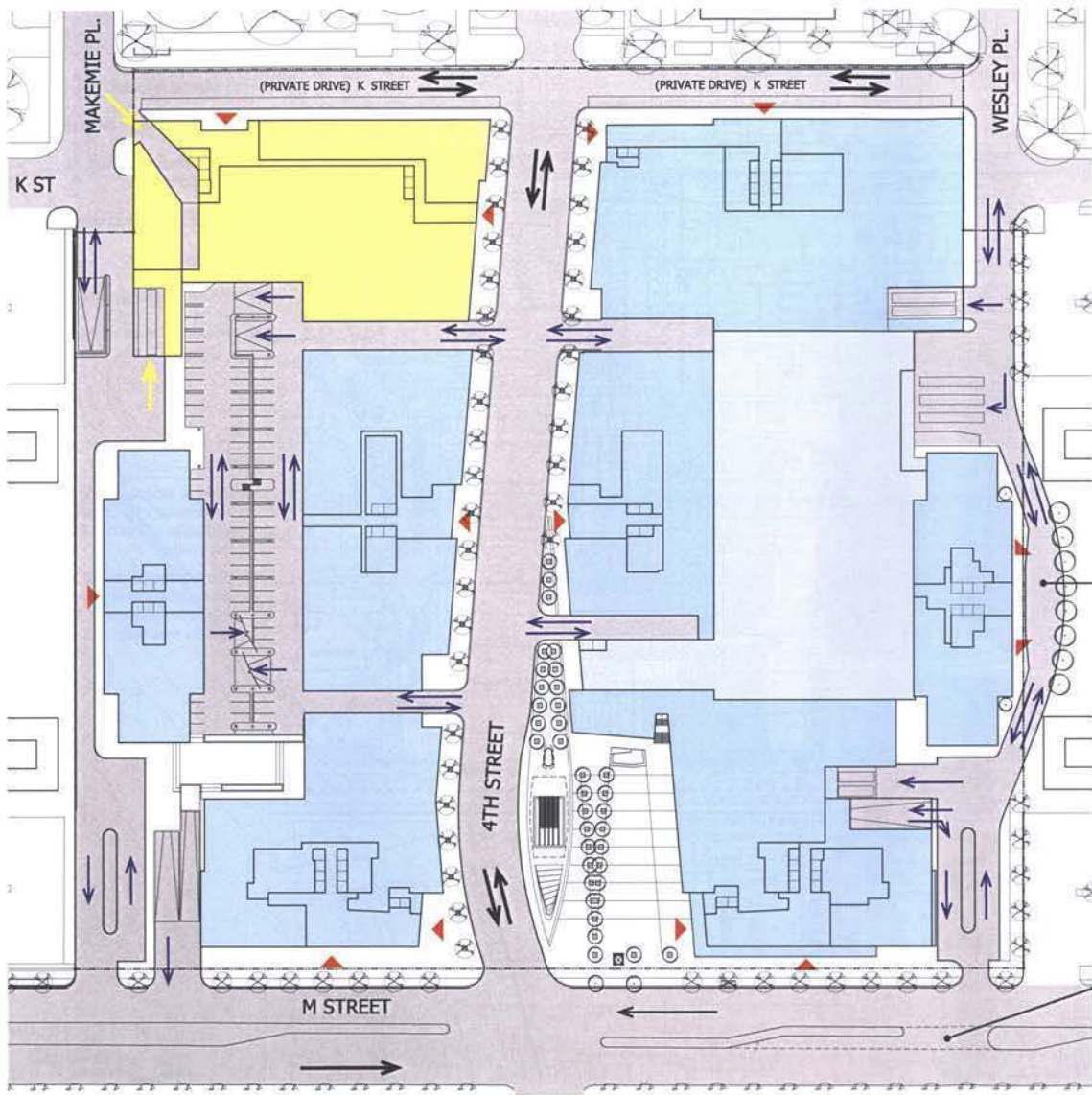




- Legend:**
- Site boundary
 - Metrobus route
 - Proposed light rail starter line
 - Metrorail green line (underground)
 - M Metrorail station entrance
 - B Metrobus stop
 - ← Road travel direction
 - ← Route of truck traffic to loading dock(s)

- Notes:**
1. Refer to Gorove Slade & Associates traffic study for additional site circulation information.
 2. Building footprints are conceptual and shown for illustrative purposes. The final layouts may vary.





NOTES:

1. INTERIOR PLAN LAYOUTS ARE CONCEPTUAL AND SHOWN FOR ILLUSTRATIVE PURPOSES. THE FINAL LAYOUTS MAY VARY.
2. THE 4TH STREET ROAD BED IS SHOWN 55' WIDE FOR ILLUSTRATIVE PURPOSES. THIS MATCHES 4TH STREET NORTH AND SOUTH OF THE SITE. THE FINAL WIDTH MAY VARY.

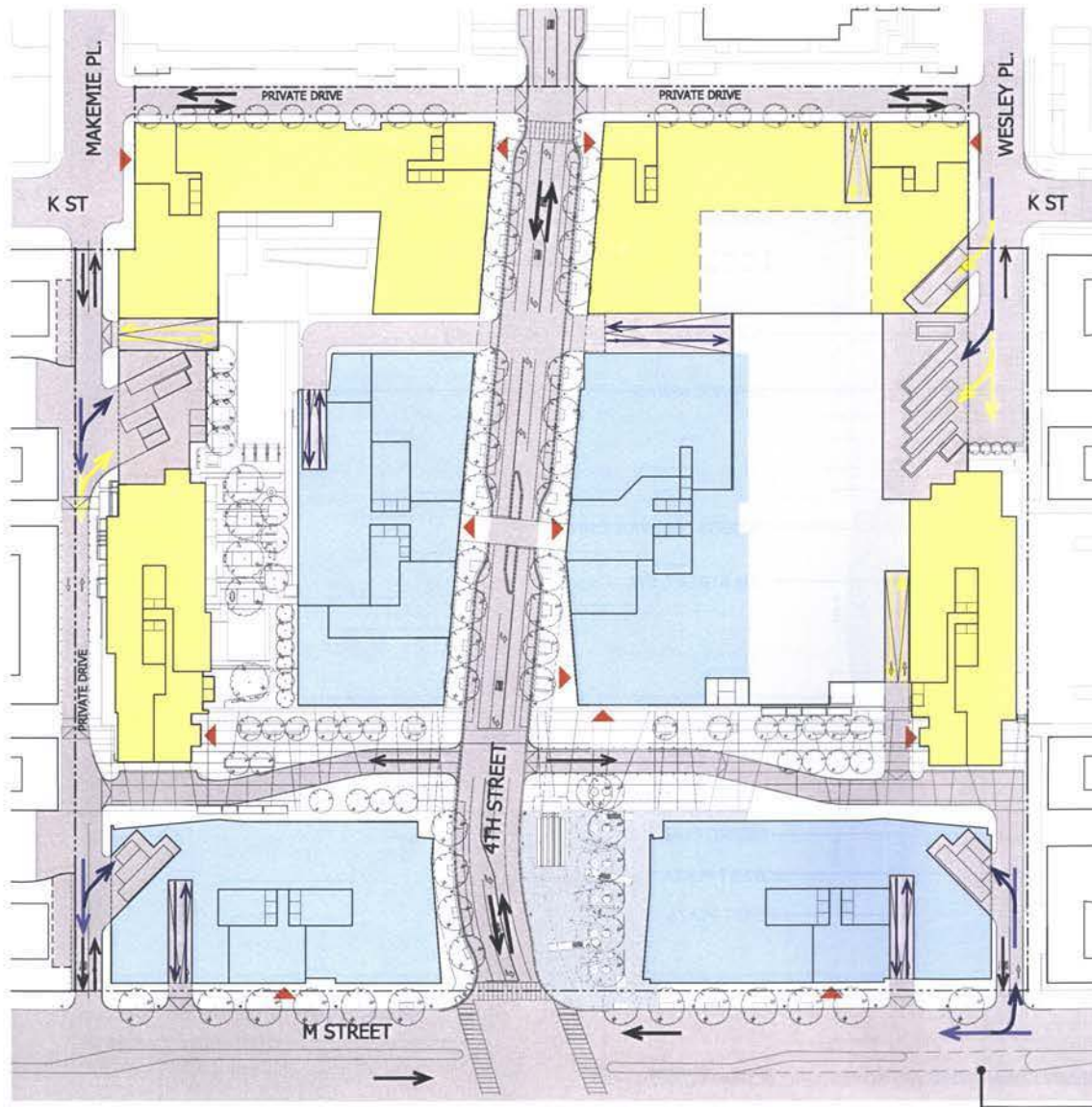
LEGEND:

-  Building Entrances
-  Road Circulation
-  Residential Parking / Loading Entrances
-  Commercial Parking / Loading Entrances

PROPOSED EASEMENT ONTO ADJACENT PROPERTY

PROPOSED M STREET MEDIAN BREAK



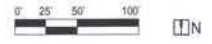


NOTES:

1. INTERIOR PLAN LAYOUTS ARE CONCEPTUAL AND SHOWN FOR ILLUSTRATIVE PURPOSES. THE FINAL LAYOUTS MAY VARY.
2. THE PLAN ILLUSTRATES FOURTH STREET WITH A 90' RIGHT OF WAY AND A 55' ROAD BED (AS BEING DESIGNED AND COORDINATED WITH DOT).

LEGEND:

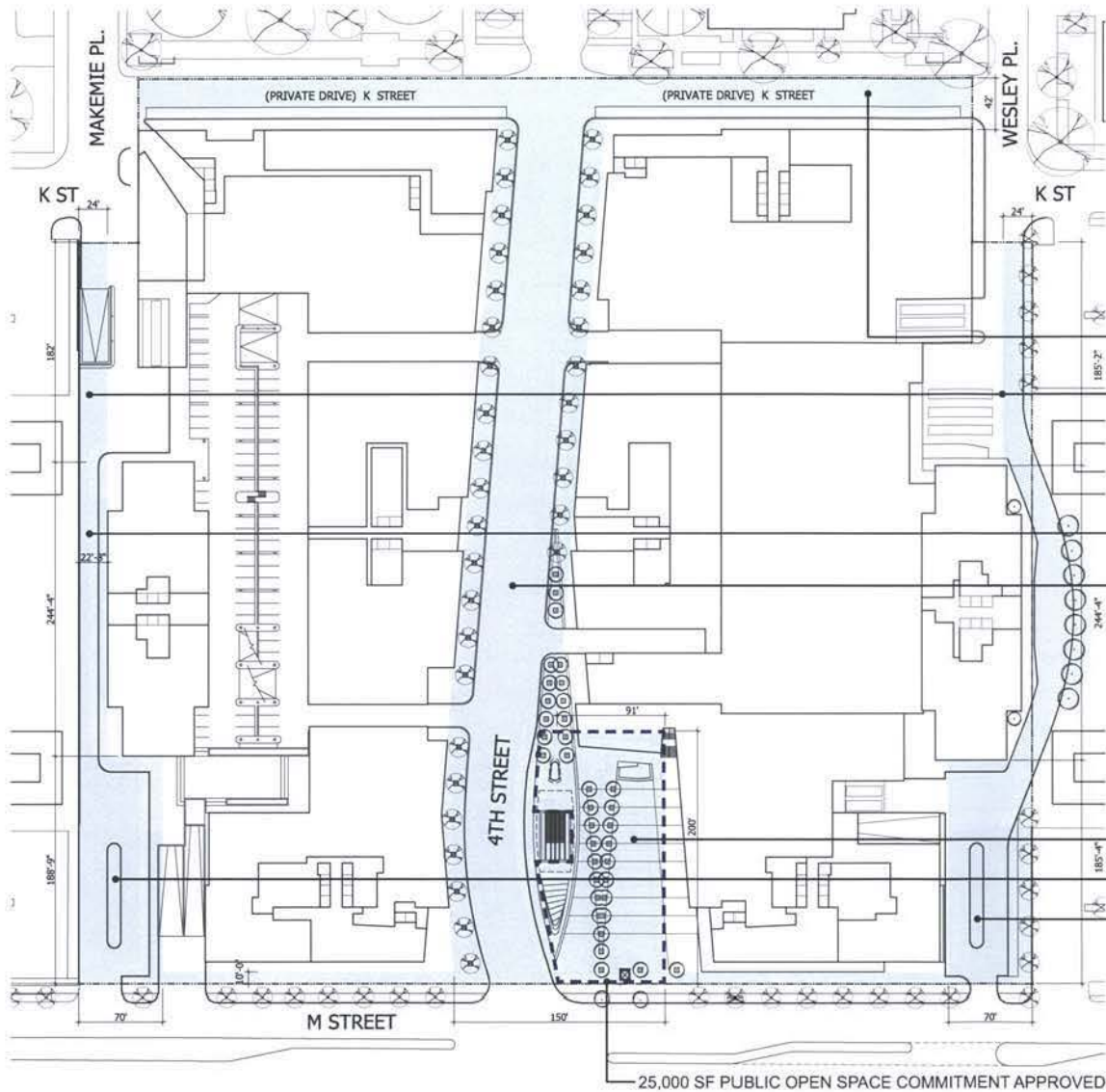
-  Building Entrances
-  Road / Private Drive Circulation
-  Residential Parking / Loading Entrances
-  Commercial Parking / Loading Entrances



APPROVED M STREET MEDIAN BREAK

W A T E R F R O N T WASHINGTON, D. C.

shalom baranes associates architects



NOTES:

1. INTERIOR PLAN LAYOUTS ARE CONCEPTUAL AND SHOWN FOR ILLUSTRATIVE PURPOSES. THE FINAL LAYOUTS MAY VARY.
2. THE 4TH STREET ROAD BED IS SHOWN 55' WIDE FOR ILLUSTRATIVE PURPOSES. THIS MATCHES 4TH STREET NORTH AND SOUTH OF THE SITE. THE FINAL WIDTH MAY VARY.
3. DIMENSIONS SHOWN ARE MINIMUMS. FLEXIBILITY TO INCREASE THE MINIMUM DIMENSIONS IS REQUESTED.

LEGEND:

- OPEN SPACE - COMBINATION LANDSCAPE AND HARD SCAPE AREAS OPEN TO THE SKY.
- APPROVED PUBLIC OPEN SPACE COMMITMENT

ACCESS / SERVICE DRIVE (REAR YARD)

SERVICE AREAS

ACCESS / SERVICE DRIVE

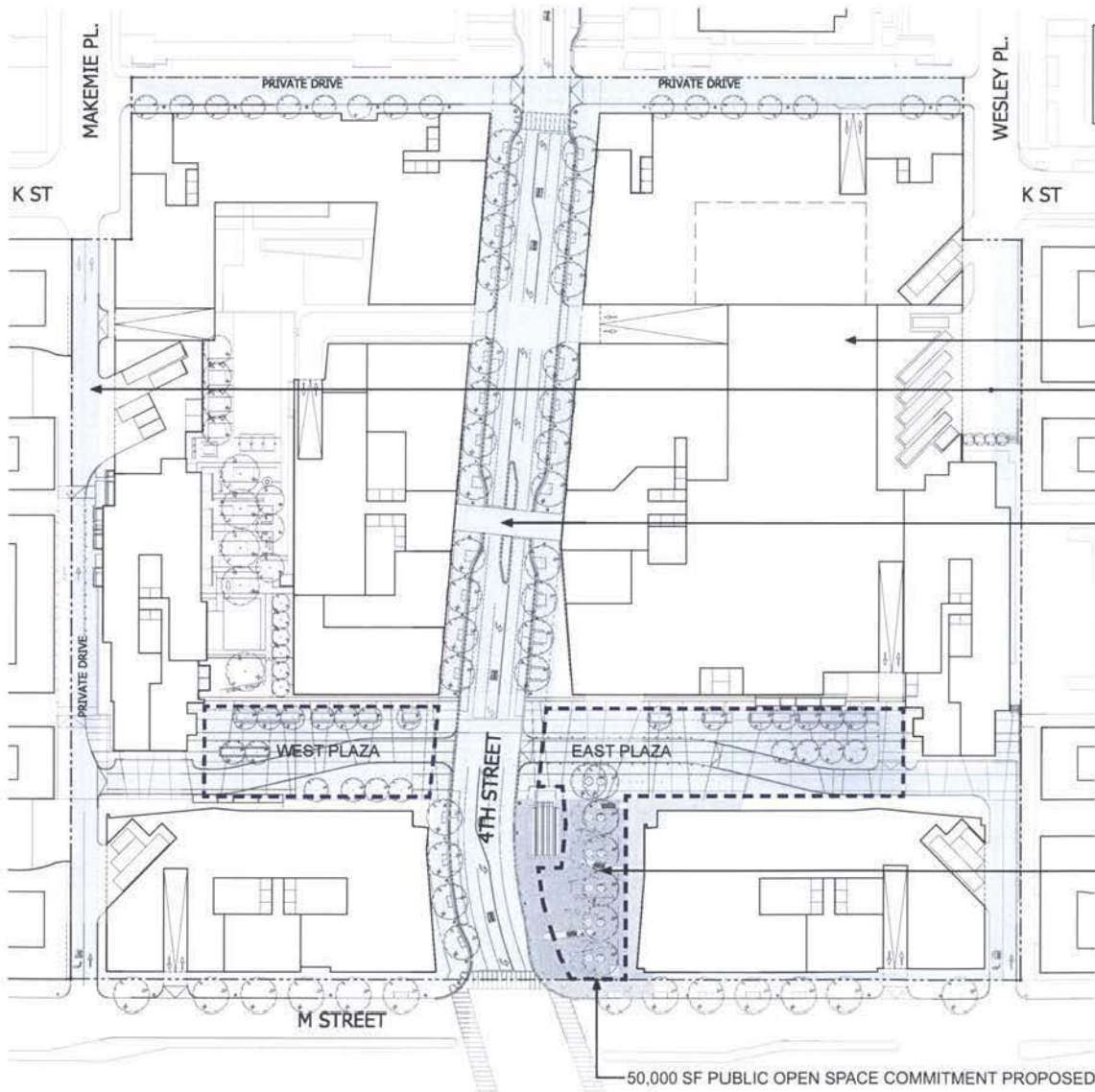
4TH STREET, SW

METRO PLAZA

WEST PLAZA

EAST PLAZA





NOTES:

1. INTERIOR PLAN LAYOUTS ARE CONCEPTUAL AND SHOWN FOR ILLUSTRATIVE PURPOSES. THE FINAL LAYOUTS MAY VARY.
2. THE PLAN ILLUSTRATES FOURTH STREET WITH A 90' RIGHT OF WAY AND A 55' ROAD BED (AS BEING DESIGNED AND COORDINATED WITH DDOT).
3. DIMENSIONS SHOWN ARE MINIMUMS. FLEXIBILITY TO INCREASE THE MINIMUM DIMENSIONS IS REQUESTED.

LEGEND:

- OPEN SPACE - COMBINATION LANDSCAPE AND HARD SCAPE AREAS OPEN TO THE SKY.
- PROPOSED PUBLIC OPEN SPACE COMMITMENT

ACCESS / SERVICE DRIVE (REAR YARD)

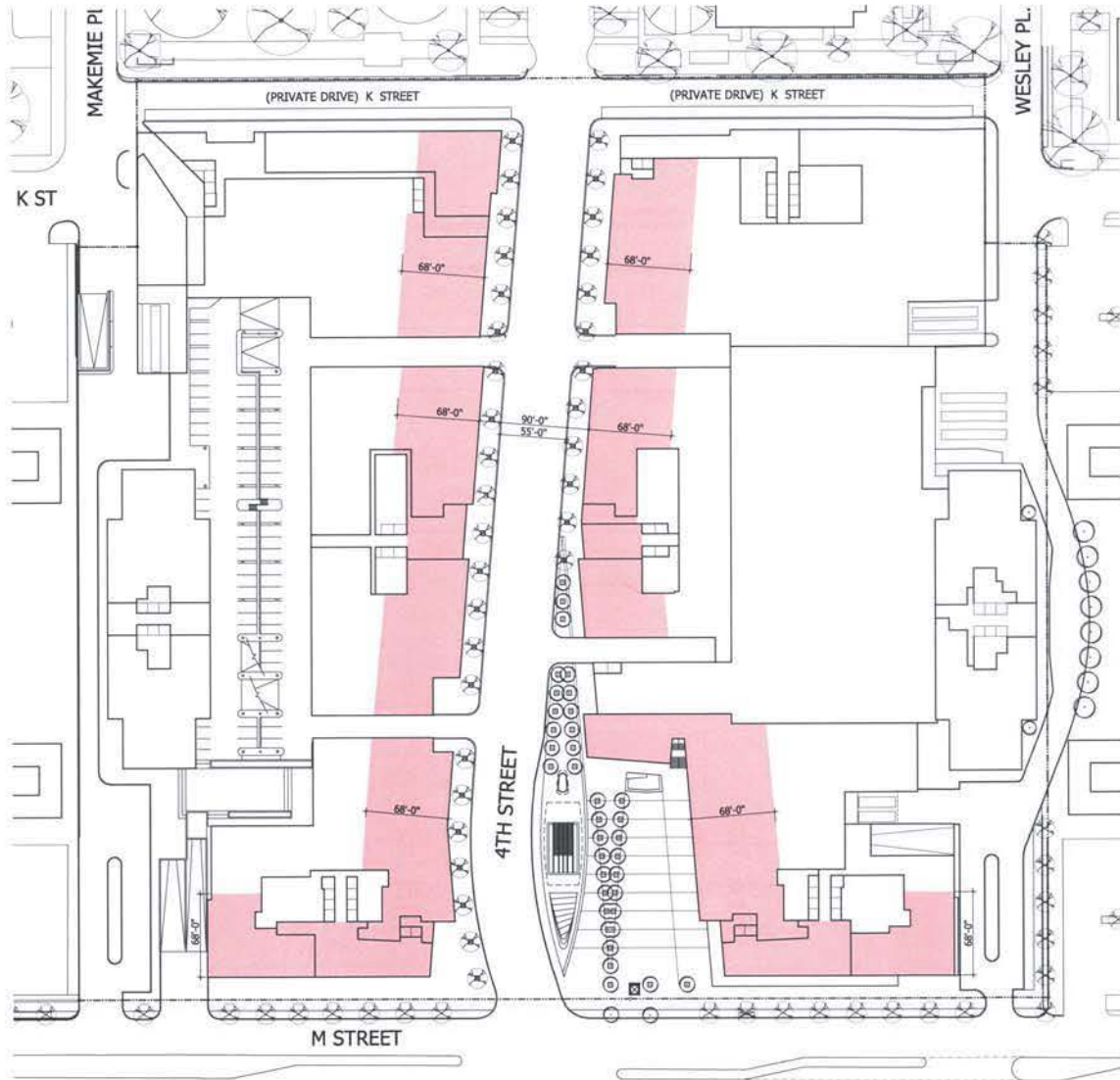
SERVICE AREAS

4TH STREET, SW

METRO PLAZA WITH METRORAIL ESCALATORS

50,000 SF PUBLIC OPEN SPACE COMMITMENT PROPOSED





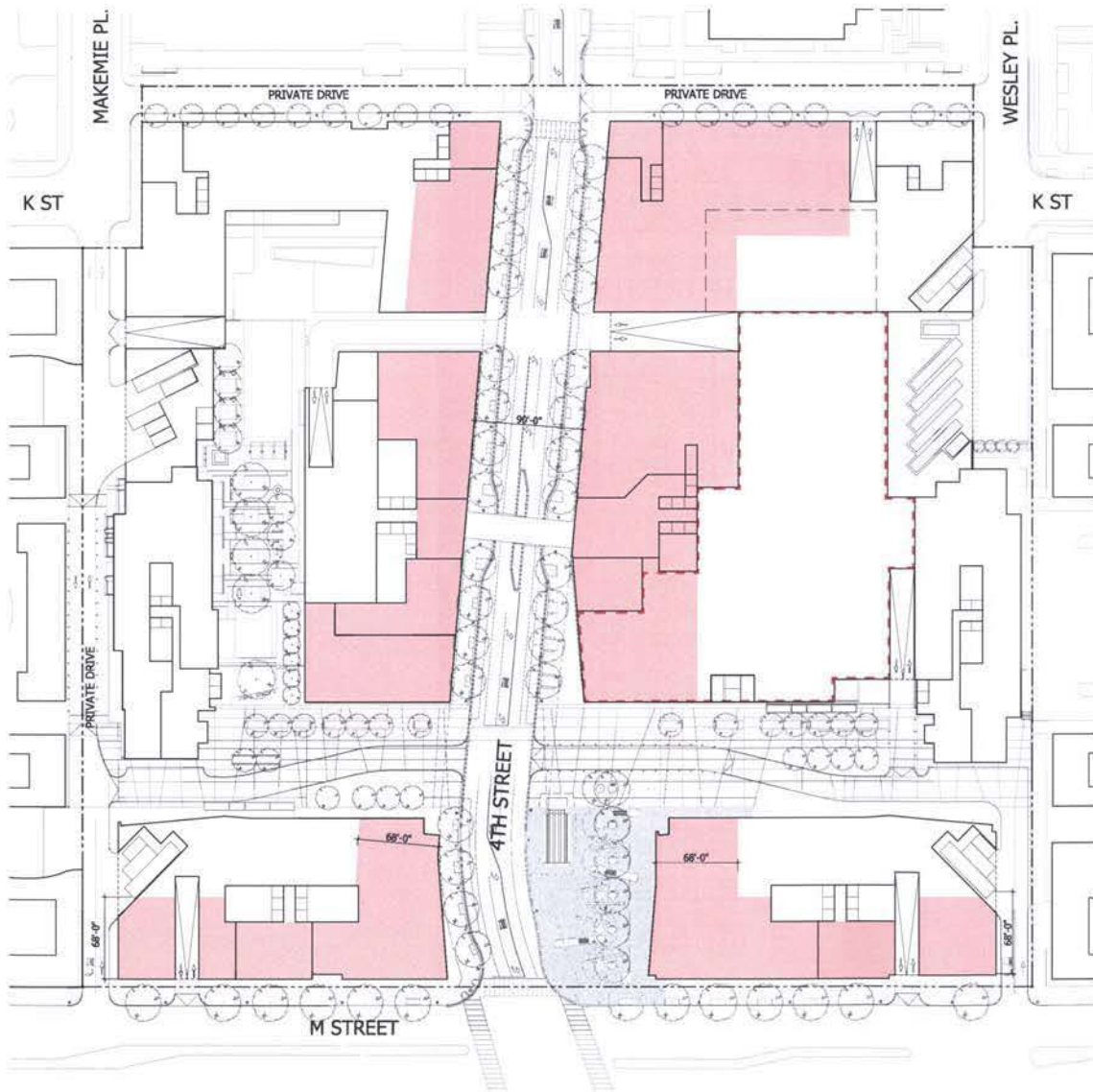
NOTES:

1. INTERIOR PLAN LAYOUTS ARE CONCEPTUAL AND SHOWN FOR ILLUSTRATIVE PURPOSES. THE FINAL LAYOUTS MAY VARY.
2. THE 4TH STREET ROAD BED IS SHOWN 55' WIDE FOR ILLUSTRATIVE PURPOSES. THIS MATCHES 4TH STREET NORTH AND SOUTH OF THE SITE. THE FINAL WIDTH MAY VARY.

LEGEND:

 **RETAIL AREA -**
THE SHADED AREA, FRONTING ON 4TH STREET AND M STREET TO A DEPTH OF 68' BACK FROM THE FACE OF THE BUILDING WILL BE TARGETED FOR RETAIL LEASING PURPOSES.





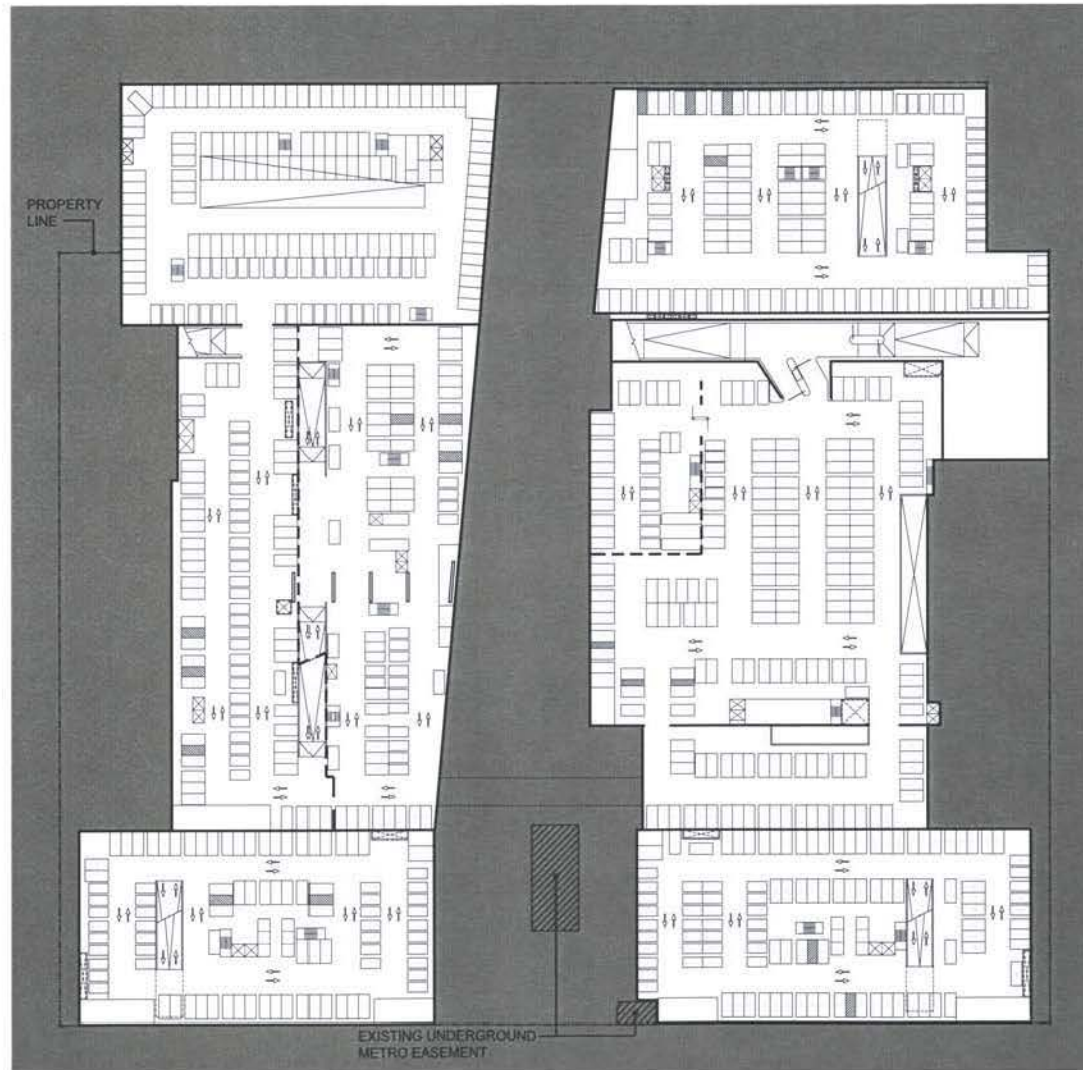
NOTES:

1. INTERIOR PLAN LAYOUTS ARE CONCEPTUAL AND SHOWN FOR ILLUSTRATIVE PURPOSES. THE FINAL LAYOUTS MAY VARY.
2. THE 4TH STREET ROAD BED IS SHOWN 55' WIDE FOR ILLUSTRATIVE PURPOSES. THIS MATCHES 4TH STREET NORTH AND SOUTH OF THE SITE. THE FINAL WIDTH MAY VARY.

LEGEND:

- MINIMUM RETAIL COMMITMENT AREA** - THE SHADED AREA, FRONTING ON 4TH STREET AND M STREET, WILL BE TARGETED FOR RETAIL LEASING PURPOSES (110,000 SF MIN.).
- PROPOSED GROCERY SHELL**





PARKING TABULATION:

THE PROPOSED DEVELOPMENT WILL PROVIDE FOR REQUIRED PARKING AT THE FOLLOWING RATIOS:

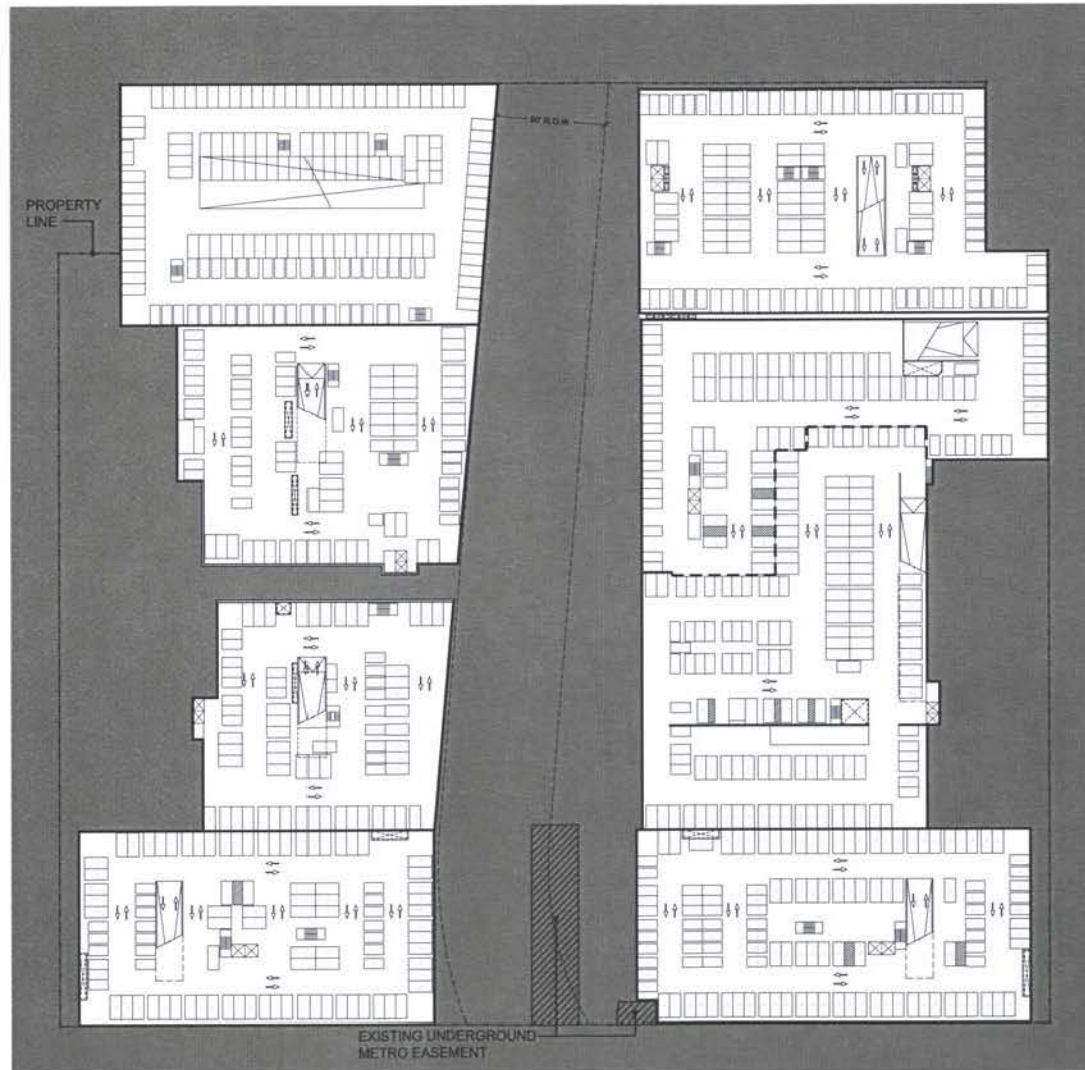
OFFICE:	OVER 2,000 SF, 1 PER 1,800 SF	=	678 SPACES
RETAIL:	OVER 3,000 SF, 1 PER 750 SF	=	99 SPACES
RESIDENTIAL:	1 FOR EACH 4 DWELLING UNITS	=	310 SPACES
TOTAL:		=	1,087 SPACES MIN

FLEXIBILITY TO INCREASE THE NUMBER OF PROVIDED PARKING SPACES TO RESPOND TO MARKET DEMAND IS REQUESTED.

NOTES:

1. INTERIOR PLAN LAYOUTS ARE CONCEPTUAL AND SHOWN FOR ILLUSTRATIVE PURPOSES. THE FINAL LAYOUTS MAY VARY.
2. RESIDENTIAL PARKING IS BASED ON AN ASSUMPTION THAT ONE DWELLING UNIT IS PROVIDED FOR EACH 1,000 SF OF RESIDENTIAL GROSS FLOOR AREA. THE FINAL DWELLING UNIT COUNT MAY VARY.
3. PARKING TABULATIONS ARE BASED ON PRORATED AREA REDUCTIONS FOR OFFICE AND RETAIL USES FOR A TOTAL PARKING REDUCTION OF 3,000SF FOR THE DEVELOPMENT.
4. UP TO 40% OF REQUIRED PARKING MAY BE COMPACT SPACES.
5. UP TO 25% OF THE REQUIRED PARKING MAY BE STACKED SPACES.
6. BICYCLE PARKING SPACES WILL BE PROVIDED AT A RATIO OF 5% OF THE TOTAL NUMBER OF PARKING SPACES REQUIRED FOR OFFICE USE.
7. DRIVE AISLES WILL BE 20' MIN. IN AREAS DESCRIBED IN DCMR 11, 2117.5.
8. PARKING SPACE SIZES:
 - HANDICAP = 12' X 19'
 - STANDARD = 9' X 19'
 - COMPACT = 8' X 16'
 - BICYCLE = 2' X 6'





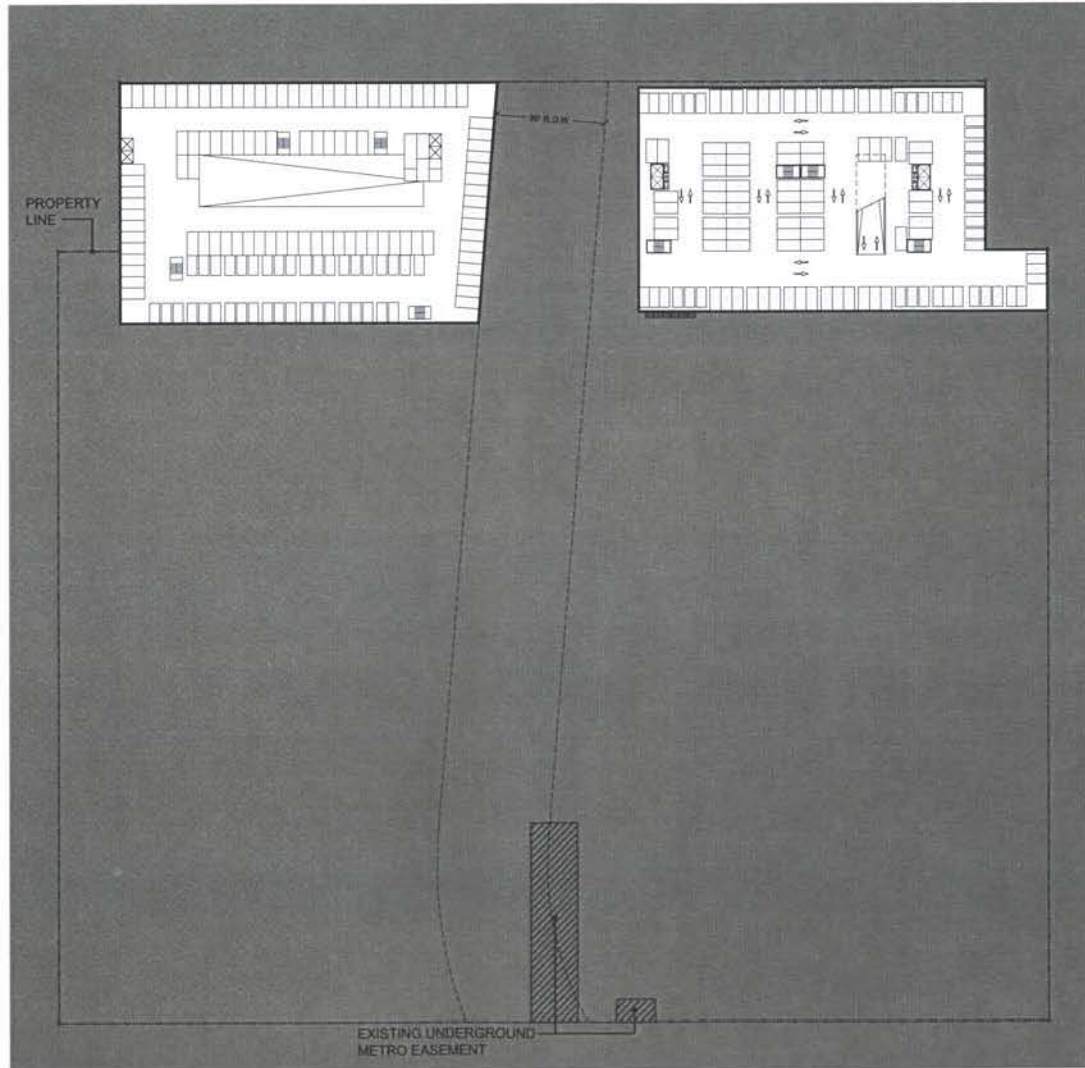
REFER TO SHEET 3.0 FOR TYPICAL NOTES.

W A T E R F R O N T W A S H I N G T O N , D . C .

Stage 1 PUD Modification - Supplemental Prehearing Submission | May 18, 2007 | copyright © 2008 sba PC

shalom baranes associates architects

B2 Level Parking Plan 3.1



REFER TO SHEET 3.0 FOR TYPICAL NOTES.

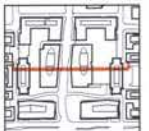
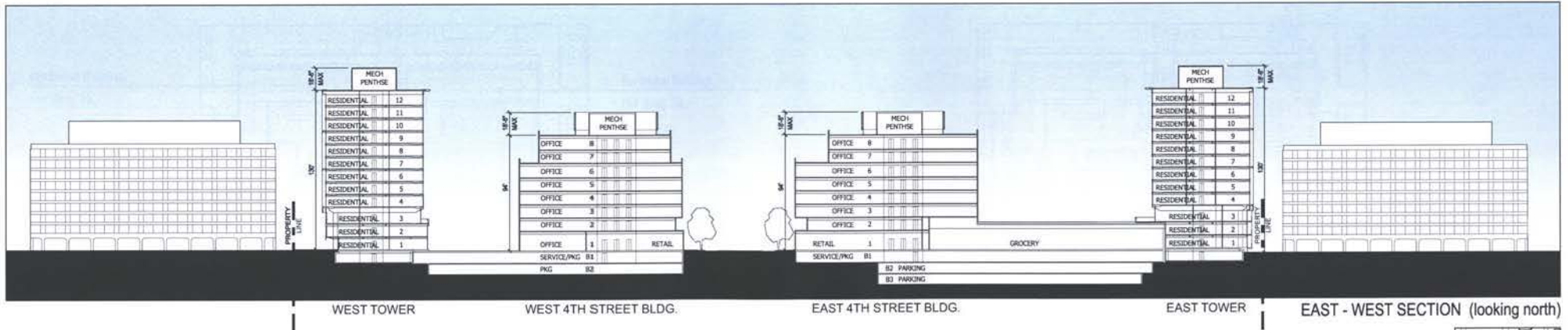
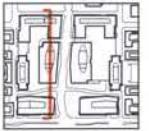
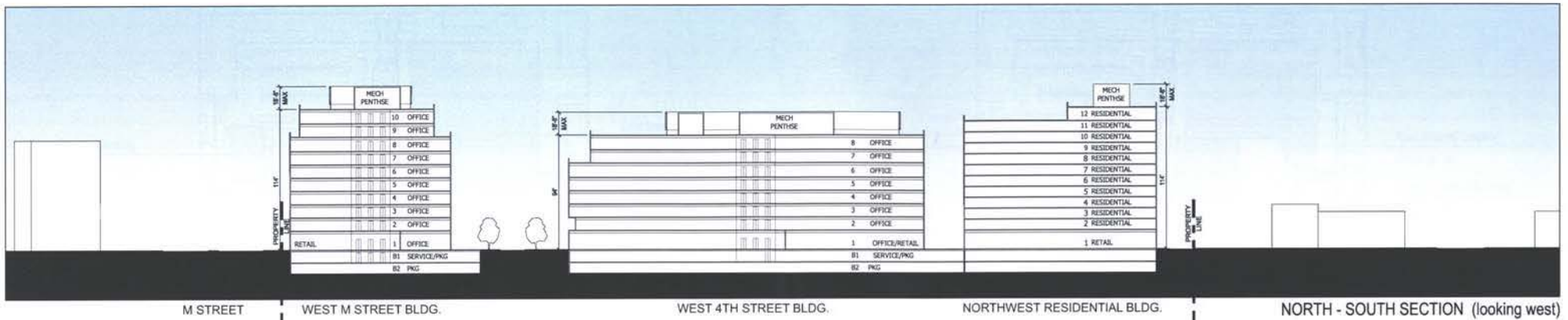




NOTES:

THE DESIGN OF THE BUILDING ELEVATIONS ARE SHOWN FOR ILLUSTRATIVE PURPOSES. THEY ARE INTENDED TO DESCRIBE ONE POSSIBLE SOLUTION THAT CONFORMS TO THE DENSITY, SETBACK, AND HEIGHT LIMITATIONS DESCRIBED IN THESE DRAWINGS. FINAL DESIGN PROPOSALS FOR NEW BUILDINGS WILL BE FILED AS PART OF SUBSEQUENT SECOND STAGE PUD APPLICATIONS.

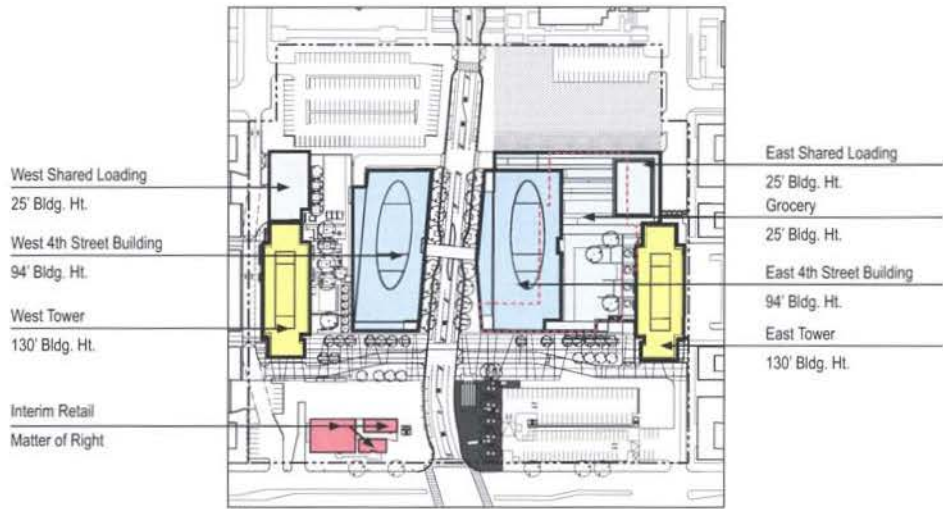




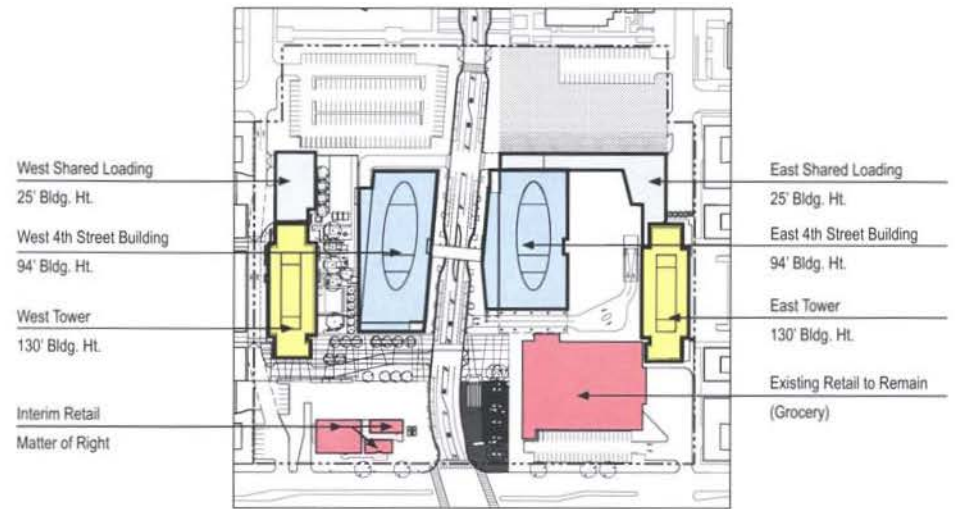
NOTES:

1. REFER TO SHEET 2.0 FOR MEASURING POINT LOCATION.
2. BUILDING HEIGHTS ARE MEASURED FROM THE ZONING MEASURING POINT ELEVATION OF 19.88'.

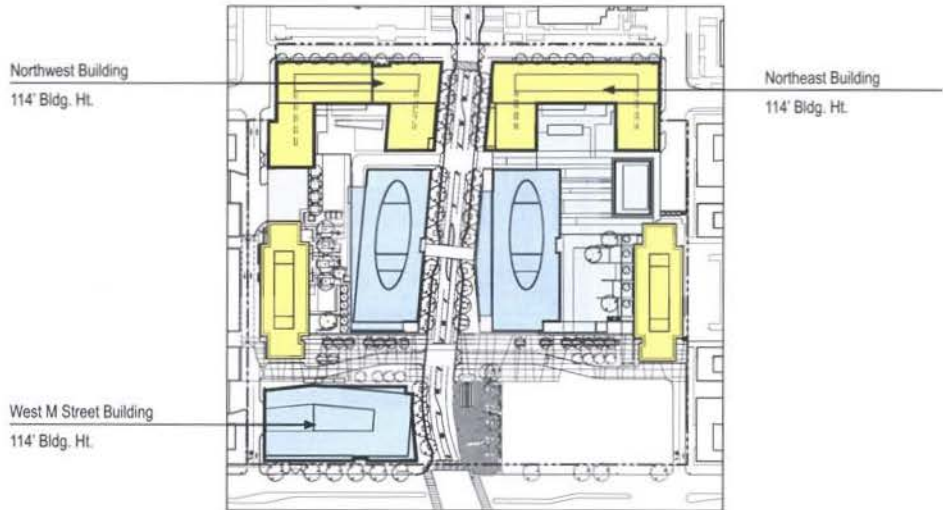




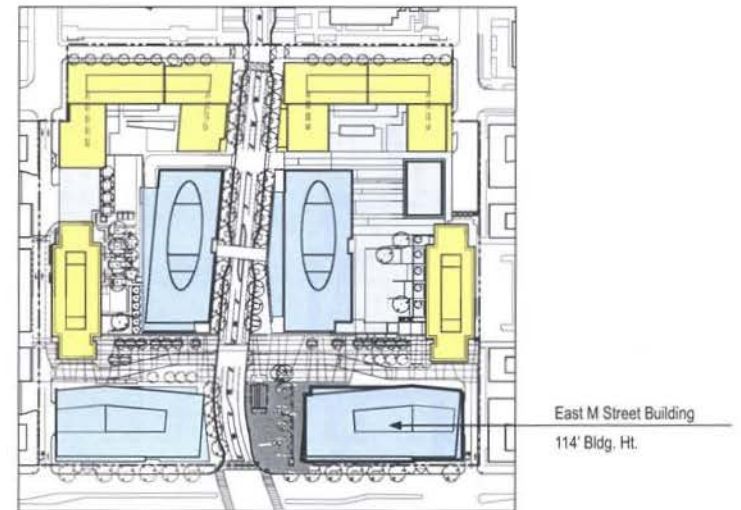
Phase 1



Phase 1 Option



Phase 2



Phase 3

E Y E STREET S. W.
(90' WIDE PUBLIC STREET)

